

# COMPETENCE DEVELOPMENT/ TRAINING COURSE CERTIFICATION SCHEME

*(Personnel Certification under ISO/IEC 17024)*

## Purpose of the Certification Schemes

This defines the framework, requirements, and processes for **personnel certification schemes** operated by **HI2AI** in accordance with **ISO/IEC 17024** and approved by a competent authority before starting the courses. This is in accordance with the Indian Government's focus on Skill Development Mission to provide World Class Infrastructure from Design to Installation. Maintenance to Operations and also assurance about meeting ESG goals. The objective of thus the Competency development scheme by HI2AI is to **conduct training / competency development course (PG Diploma or Certification- Short duration or long duration) of individuals** so as to enable them to perform defined roles in railway signalling, telecommunication, safety-critical digital systems, cyber security, data analytics, and other emerging railway technologies. This document establishes a uniform certification structure applicable across all schemes, with **scheme-specific requirements detailed in annexures**.

## 1.2 Scope of Application

This document applies to:

- Applicants seeking certification under its personnel certification schemes
- Scheme governance and oversight bodies

## 1.3 Normative References

The following normative references are indispensable for the application of this document:

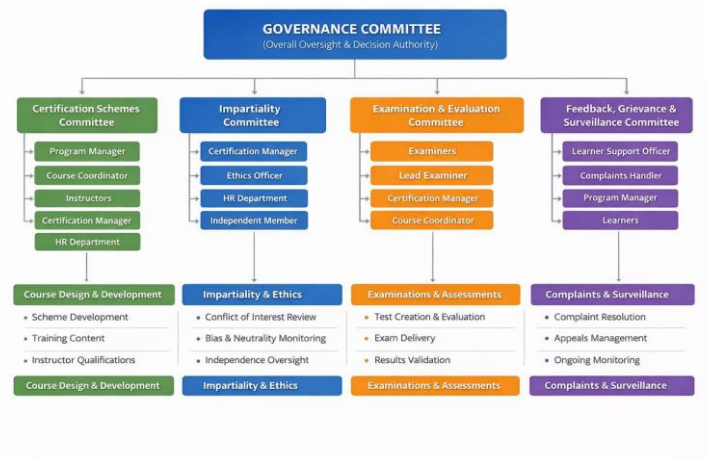
- ISO/IEC 17024 — Conformity assessment: General requirements for bodies operating certification of persons
- Applicable Indian railway and safety standards, as referenced in scheme annexures

## 2. SCHEME OWNERSHIP AND GOVERNANCE

- Scheme objectives and scope
- Competence requirements and assessment criteria
- Certification decisions
- Issuance, suspension, and withdrawal of certification
- Integrity and impartiality of certification activities

No third party holds certification or licence-issuing authority under these schemes.

## Scheme Governance Structure:



## 3. GENERAL SCHEME FRAMEWORK

### 3.1 Object of Certification

The object of certification under these schemes is the **individual person** performing defined job roles or functions. Certification does **not** apply to Products, Systems, Organizations, Projects

### 3.2 Certification Categories and Schemes

- **Scheme 1:** Railway Signalling and Safe Train Operations
- **Scheme 2:** Signalling Principles
- **Scheme 3:** Signalling Designing Layout Plans/ Drawings for Modern Signalling Systems
- **Scheme 4:** Signalling Applications Engineering
- **Scheme 5:** Signalling Systems, Management and Engineering
- **Scheme 6:** OT Cybersecurity Systems for Railway Signalling and other OT Systems
- **Scheme 7:** Signalling Research & Investigation Project for Emerging Railway Technologies
- **Scheme 8:** Railway Telecommunications
- **Scheme 9:** Railway Signalling & Telecom Professional Competency

### 3.3 Competence-Based Approach

All schemes are based on **Training assessment through examination, Viva Voice or practicals**, comprising Knowledge, Skills, Examination & Evaluation. Certification is granted solely based on marks obtained during the course.

## 4. ELIGIBILITY REQUIREMENTS

### 4.1 General Eligibility

Applicants shall meet defined eligibility requirements related to Educational background (where relevant), Professional experience, Role-specific prerequisites. Eligibility criteria are defined to ensure applicants have a reasonable likelihood of possessing required knowledge and skill.

**4.2 Role-Specific Eligibility** -Additional eligibility requirements, if any, are defined in scheme annexures. Eligibility requirements are **not linked to mandatory training** provided by the Certification Body.

**Note: For further details on the course contents etc, pls contact us.**